



**Nutmeg Farm, 60 South Rd, Portland, CT 06480**

**Two Sanctioned Barn Hunt Trials  
Sunday, July 30, 2017**

**Handlers' meeting 9:30am; Trial starts after meeting**

Judge Carol Soeldner, Dedham, MA

Trial opens: July 6, 2017  
Entries close: July 20, 2017

**\*\*ONLINE ENTRIES ONLY\*\***

Enter online at [www.nutmegfarm.net](http://www.nutmegfarm.net)

Trial 1: Instinct, Novice, Open, Senior, Masters  
Trial 2: Novice, Open, Senior, Masters

Entry fees for Instinct \$17.50  
All other classes \$25.50  
(includes BHA recording fee)

Permission has been granted by the Barn Hunt Association, LLC for the holding of these barn hunt trials under BHA rules and regulations.



Trial Secretary: Matthew Milleville Trial Chair: Lynnette Milleville  
Trial Committee: Julie Soucy, Rachel Ortiz, Breanna Famoso  
Email: [trials@nutmegfarm.net](mailto:trials@nutmegfarm.net)  
Phone: (860) 342-4279  
[www.nutmegfarm.net](http://www.nutmegfarm.net)

**Exhibitor Information**

The trial grounds are on a working farm. Please respect our farm and livestock. **DO NOT ENTER RESTRICTED AREAS AND DO NOT LET YOUR DOGS NEAR THE LIVESTOCK.** Injured livestock expenses including veterinary and disposal costs are the responsibility of the owner/handler. Livestock replacement is valued at current market value.

All dogs must be on a leash and under control while on trial grounds. **No flexi-leads are permitted on trial grounds.**

Due to the proximity of our neighbors please quiet barking dogs when not working. **Please control excessive barking.**

There is **no smoking** on the grounds.

Please **pick up after your dog** and dispose of their waste in the appropriate trash cans provided throughout the grounds.

Food and beverages will be available on the grounds.

Exhibitors are responsible for water for their own dog(s).

**Motels**

Super 8 Motel (860) 372-4636 1499 Silas Deane Hwy, Rocky Hill, CT  
Super 8 Motel (860) 632-8888 1 Industrial Park Rd, Cromwell, CT

When booking your room be sure to check that the hotel still accepts dogs. Please pick up after your dog at your hotel.

**Vaccinations**

All dogs should be current with all vaccinations. Proof of current rabies vaccination must be provided upon request. Sick dogs will be asked to leave the trial grounds for the safety of all competitors.

## Veterinary Clinic

Pieper Memorial Veterinary Center, 730 Randolph Rd, Middletown, CT  
(860) 347-8387

## Classes Offered

Trial 1: Instinct, Novice, Open, Senior, Masters

Trial 2: Novice, Open, Senior, Masters

## Trial Format

Classes will run in the following order: RATI, RATN - Trial 1, RATN - Trial 2, RATO - Trial 1, RATO - Trial 2, RATS - Trial 1, RATS - Trial 2, RATM - Trial 1, RATM - Trial 2. **This is the trial class order.** We do not provide class start times because they are too likely to change the day of the trial.

## Run Order

A Show Catalog and a List of Dogs by Trial will be sent out no later than the day before the show. Please use the Show Catalog to review your dog(s) and your own information. The List of Dogs by Trial catalogs how many and which dogs are in each trial and class. The List of Dogs by Trial is NOT the trial run order. **The trial running order will NOT be provided until the day of the trials.**

## Awards

Class ribbons will be given for 1st-4th place. Qualifying ribbons will be awarded. High Score Novice, Open, Senior, and Master, awards will also be awarded. Awards will be presented at the end of each trial. Ribbons will not be mailed. **Please let us know if you might be earn your RATCH at our trial.**

## Bitches in Season

Bitches in season may compete at this trial and will be run at the end of their class. Bitches in season are required to wear panties at all times except during potty breaks. This includes when competing. Bitches in season will have a separate area to be walked. If bringing a bitch in season, please inform the trial committee prior to the trial and inform all exhibitors at the judge's briefings.

## Weather

This trial will be held rain, snow, or shine. Please bring weather appropriate gear. If it has rained or snowed recently the grounds can be muddy or icy. If the weather is hot, there is a pond on the grounds for dogs to swim in. Please ask before going to the pond as there might be livestock in that area. Exhibitors are responsible for water and shade for their dogs.

Trial opens July 6, 2017 and closes July 20, 2017. Entries will be accepted in the order they are received until trial limits are reached.

\*\*\*\*\* WE ARE ONLY ACCEPTING ONLINE ENTRIES \*\*\*\*\*

**ENTRIES MUST BE SUBMITTED ONLINE VIA OUR WEBSITE:**

[www.nutmegfarm.net](http://www.nutmegfarm.net)

Entry fee must accompany all entries to be valid. **You may pay online using a credit card.** Directions to do so will be provided during the online entry process. If you prefer to pay by check please make it out to "Nutmeg Farm" and mail to Nutmeg Farm, 60 South Rd, Portland, CT 06480. Be sure to include your dog(s) name(s) and official Barn Hunt number(s) with your check. Be sure to mail your check early enough that it will arrive before the trial closes. There will be a \$50 charge for all returned checks.

**\*\*No refunds will be granted after closing date.\*\***

Entry fees will not be refunded in the event that a dog is absent, disqualified, excused, or barred from competition by the action of the trial committee. No entry fee will be refunded if the trial cannot open or be completed by reason of riots, civil disturbances, fire, acts of God, weather, public emergency, act of public enemy, or any other cause beyond the control of the trial committee. Once the trial closes entry fees are not refundable.

All dogs must be registered with the Barn Hunt Association and have an official Barn Hunt number to enter and participate in the trial. Dogs may enter both Instinct and Novice classes at the same time until a RATN title is earned. **Move ups are welcomed.**

It is the owner/handler's responsibility to know the BHA Rules and Regulations, which can be found at [www.barnhunt.com](http://www.barnhunt.com). Therefore it is recommended that the BHA Rules and Regulations be read before attending the trials.

Exhibitors are responsible for being at the staging area and ready to enter the Blind when it is their turn. Competitors will enter the Blind five at a time. Blind numbers will be included on the sign in sheets.

Please see the Barn Hunt Rules and Regulations for more information regarding blinds. The gate steward and judge are not required to wait for any dog holding up a class. The club has no obligation or responsibility to locate competitors not ready to enter their blind.

## Soiled Bales

There will be a fee per soiled bale. Cost will be Market Value.



# NUTMEG FARM

60 South Road  
Portland, CT 06480  
nutmegfarm.net

## DIRECTIONS

### From Hartford

Rt 84 East exit 55 to Rt 2 East  
Rt 2 to Rt 17 South (Glastonbury-Portland)  
Left at Isinglass Hill Road for .7 miles.  
Turn right on to Thompson Hill Road for 1.4 miles.  
Turn left at Old Marlborough Turnpike .4 miles.  
Turn right on South Road for .6 miles.  
Farm on Right.

### From South (Middletown) RT 17/Rt 66

Follow over Connecticut River into Portland.  
Turn right on to Rt 66 (East) follow for 2 miles.  
Turn left onto Rt 17 (North) follow for 2 miles  
Turn right on to Sage Hollow Road for .3 miles.  
Take slight right on to Rose Hill road for .2 miles  
Turn left on to Cox Road 1.2 miles  
Turn left on to South Road .3 miles  
Farm on left.

***Please contact us to reserve handicapped parking.***

## PARKING IS LIMITED

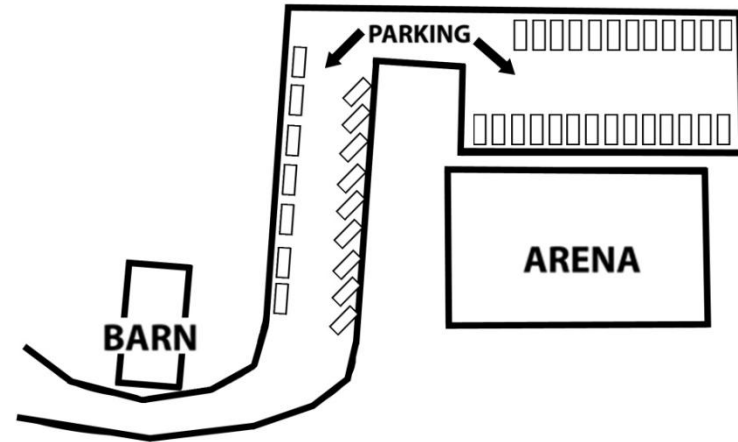
Down by the arena, please park cars close together.

In the parking lot above the arena park as follows:

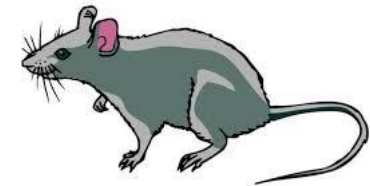
On the side closest to the arena, cars need to park diagonally.

On the side furthest from the arena, cars need to parallel park.

If lower parking lots are full, please park near the house.



Please park as shown on this map.



# Happy Hunting!